

## Space structures

---

# 6. Finite element procedures. Real design cases.

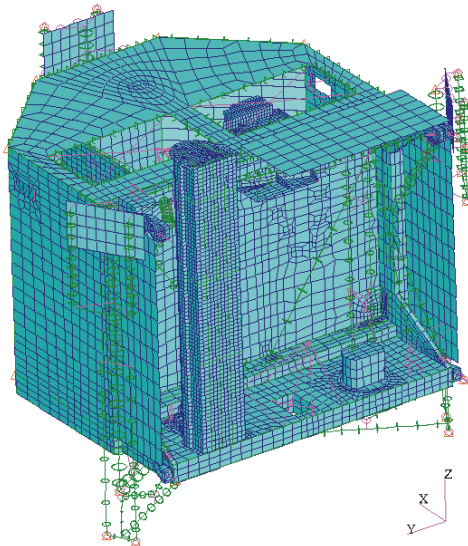
*Prof. P. Gaudenzi*

*Università di Roma La Sapienza, Rome Italy*

*paolo.gaudenzi@uniroma1.it*

## CASE STUDIES

In this part of the course three different spacecraft (or components) will be examined from the viewpoint of structural design. The finite element analyses conducted in the frame of these studies will be discussed.

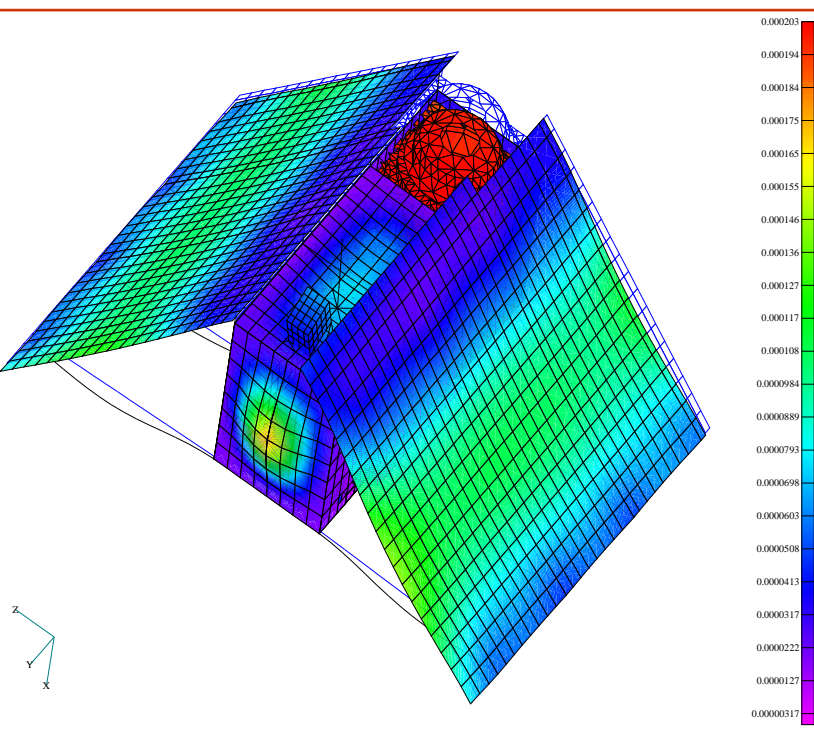


### The Rosetta lander structure

Courtesy of DLR

## CASE STUDIES

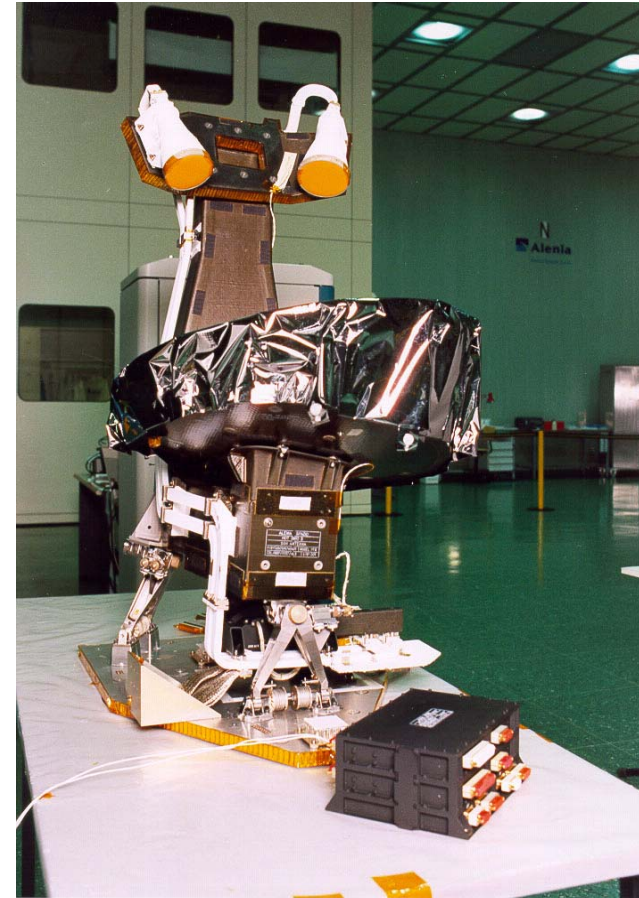
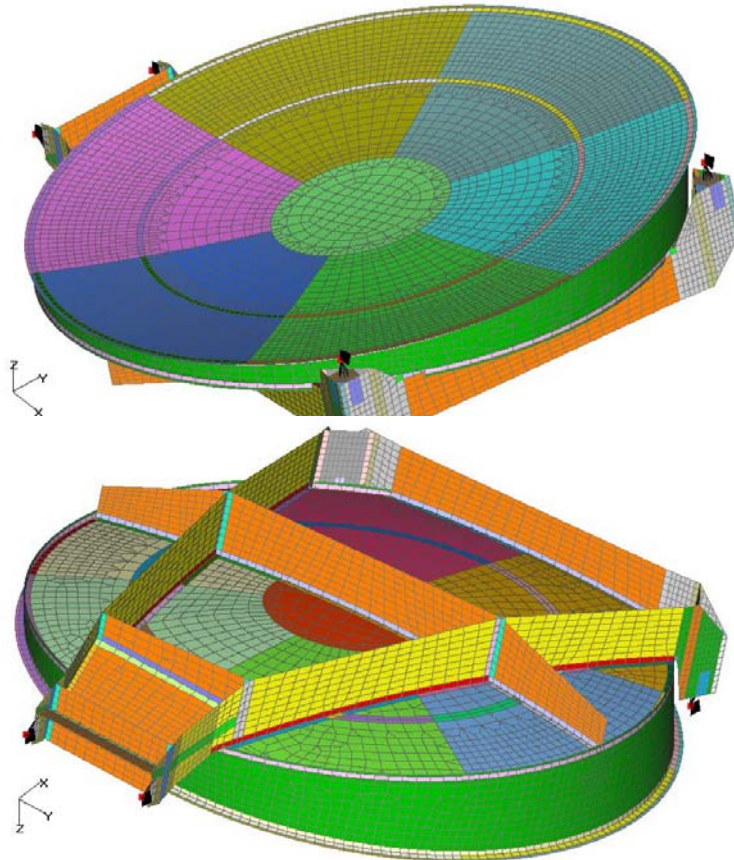
### The MITA minisatellite structure



Courtesy of Oerlikon Contraves Italia

## CASE STUDIES

### Dual gridded reflector structure



Courtesy of Alenia Spazio

## CONCLUDING REMARKS

---

Real case modelling

Correlation with test verification

Basics design approaches

Different missions

Analysis of a payload structure