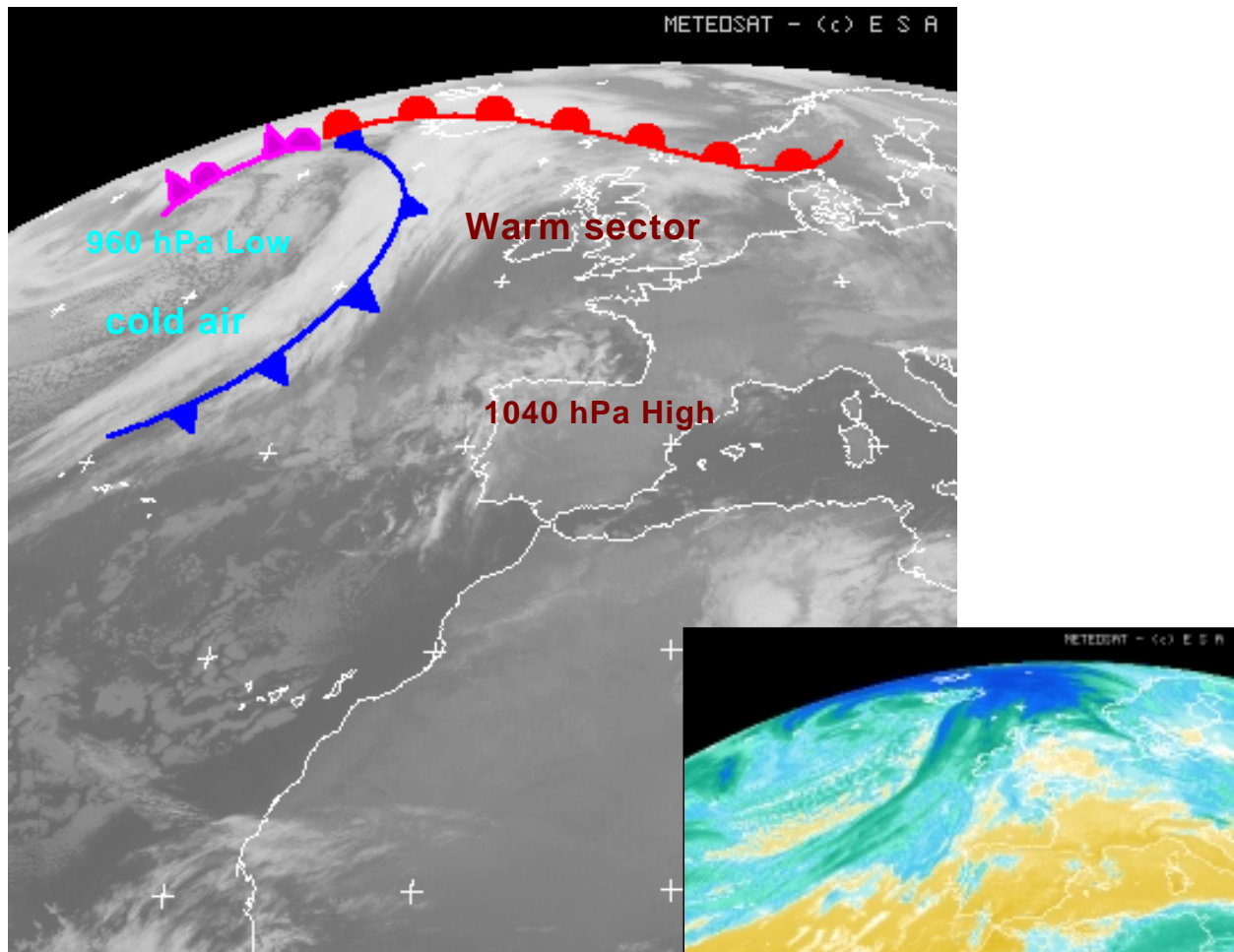


(7/10) Winter low-pressure system

The area above the Atlantic Ocean generates a continuous series of low-pressure systems that are carried eastwards across Europe.

The satellite picture shows a typical European winter weather pattern, with well-developed lows and clearly visible fronts.



A front system with a strong warm-air sector is positioned between the British Isles and Iceland.

The fronts are associated with a 960 mbar (or hPa) low southeast of Greenland. The systems move in the direction of Europe.

There is a steep north-south pressure gradient, with a 1040 mbar high positioned above south-western Europe, so the air masses are moving rapidly.

The cold air following behind the front gives rise to the formation of typical scattered convection clouds visible in the b/w satellite picture. The coloured (small) satellite image shows the surface temperature on land and above the seas.

Images: The Weather Machine CD-ROM, (C) ESA 1997