

A vertical column of fire and molten lava against a black background. The fire is bright orange and yellow at the top, transitioning to a darker, more turbulent flow of molten lava below. The lava appears to be dripping and splashing, with some solidified rock fragments visible at the bottom.

RISK-EOS

A EUROPEAN NATURAL
DISASTER SERVICE

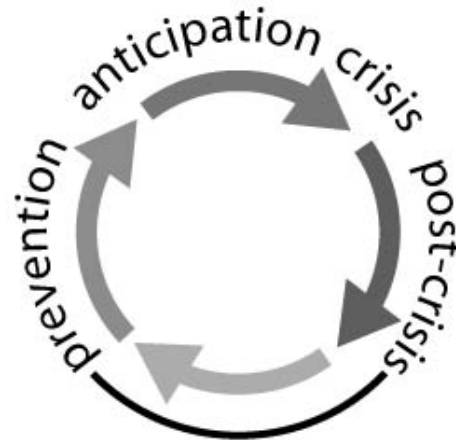
COLOCATION
MEETING

GSE Information Day

Arnaud de Saint Vincent
ESRIN, 8 March 2007

RISK-EOS is a network of European service providers delivering geo-information services to support the management of flood, fire and others risks throughout all phases:

- **PREVENTION**
- **ANTICIPATION**
- **CRISIS**
- **POST CRISIS**



Overview: RISK-EOS portfolio

A focused portfolio of 7 pan-European services



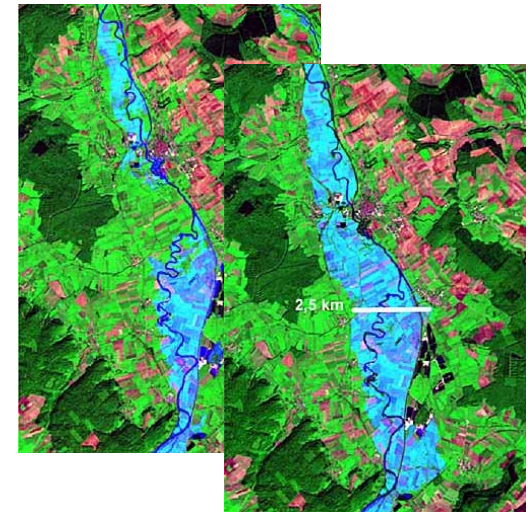
MULTI-RISKS

Assets mapping:

High and Very High resolution mapping of urban extension and infrastructures of areas at risks

Rapid mapping of floods and fires :

H24 Service ensuring the implementation of spatial means for data acquisition and mapping and the monitoring of floods and fires or any type of disaster like earthquakes at decametric scale



Overview: RISK-EOS portfolio



FIRES

Medium-Resolution Fires Monitoring

Daily monitoring of active fires and burnt areas (Mediterranean countries)

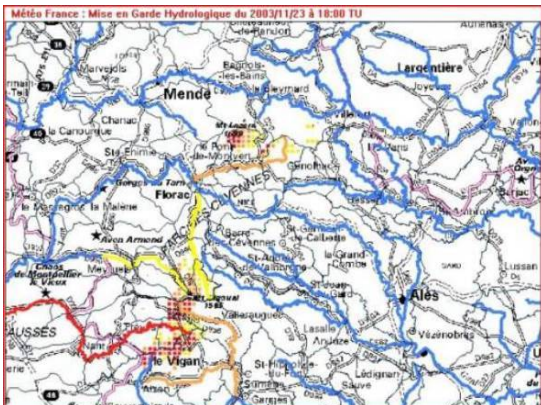
Burn scar mapping

High-resolution mapping of forest fires impact

FLOODS

Flood Risk Analysis :

Flood extent and risk mapping, evaluation of potential damages/losses, based on recent, historical and simulated data plus information integration into a "Flood Information System"

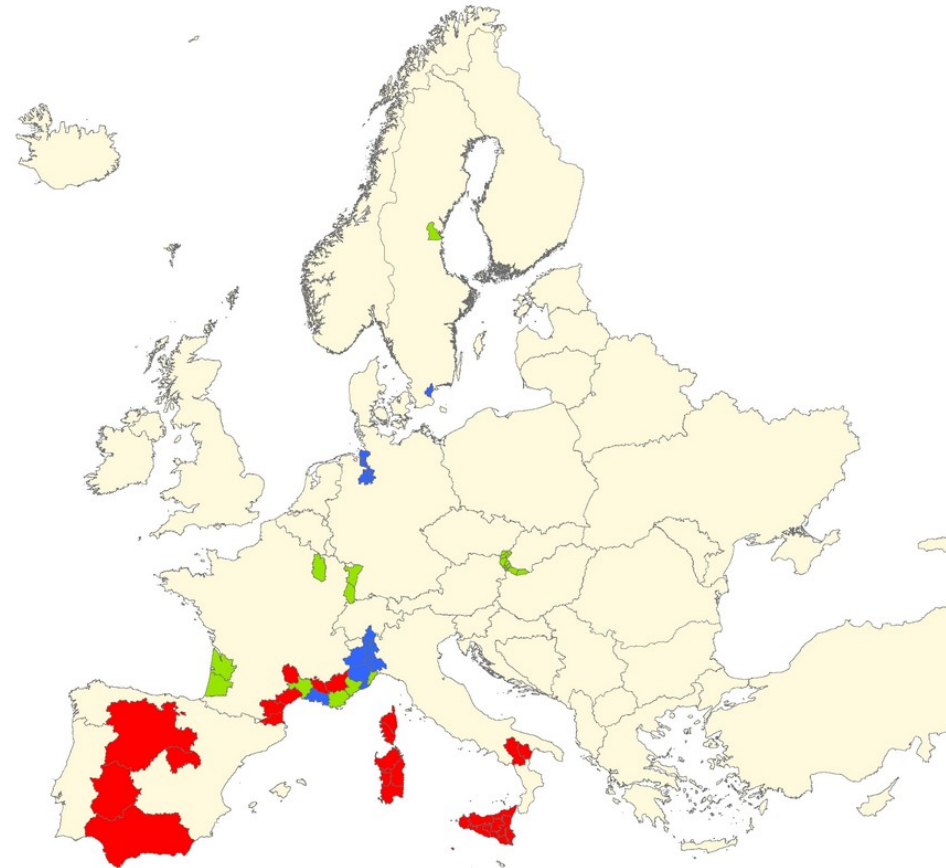
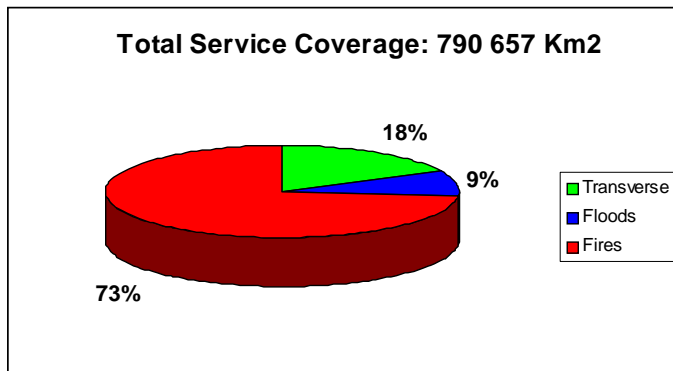


Flash Flood Early Warning:

Real time service for flash floods forecasting

Service delivery roll out (1/2)

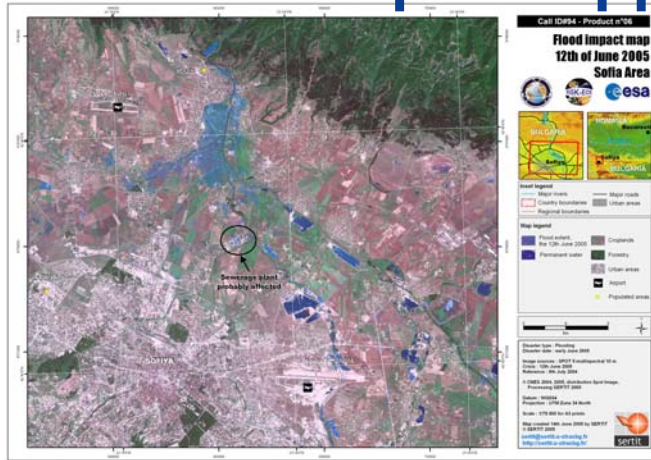
Phase 1: Service Delivery roll out



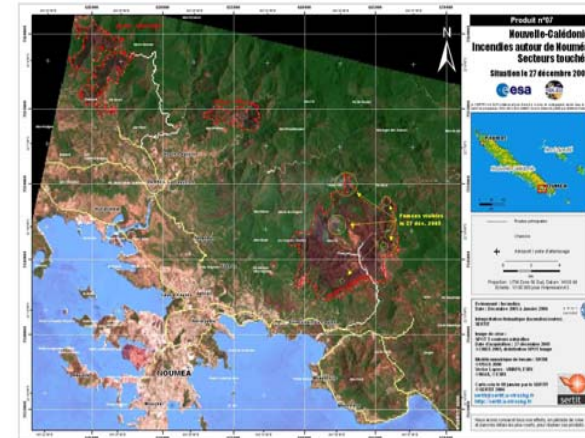
1 year of Rapid Mapping in RISKEOS

CHARTER Call	Date of CHARTER activation	Country	Region	Event	User who activate the CHARTER	Added Value Provider
105	06-sept.05	France	Gard & Hérault	Flood	DDSC	SERTIT
	dec 2005	France	New Caledonia (Mont	Forest fires	Govt New Caledonia	SERTIT
	March 2005	France	East Region (Mosel)	Flood	EMZ East	SERTIT
115	21-mars-06	Algeria	Laalam regio (North B	Earthquake	DDSC	SERTIT
116	01-avr.-06	Germany	Elbe river	Flood	GMLZ	DLR
117-118	04-avr.-06	Czech	East of Prague + Brnd	Flood	MIC	SERTIT
119	07-avr.-06	Austria	Morava river (Eastern	Flood	Region Alarm Centre	SERTIT
120	14-avr.-06	Hungary	Tisza river	Flood	MIC	DLR
121	19-avr.-06	Romania	Danube river	Flood	ROSA	DLR+ROSA
126	29-juil.-06	Lebanon		Oil Spill	MIC	DLR

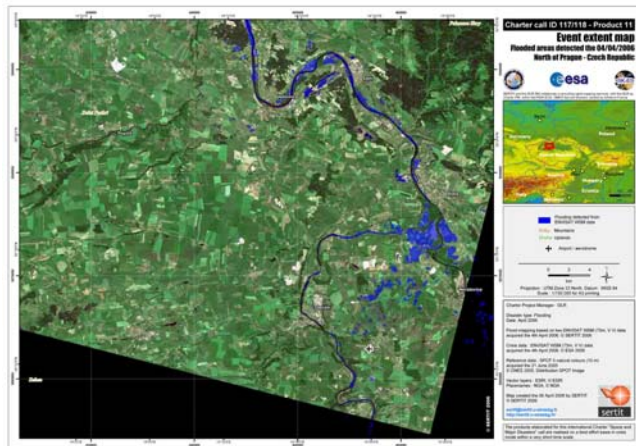
Rapid Mapping Examples



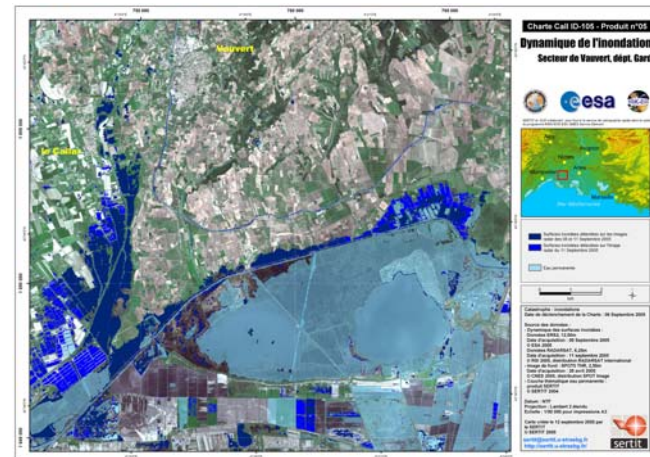
Flood in Bulgaria June 2005



Forest Fire in New Caledonia Dec. 2005



Flood in Czech Republic April 2006



Flood in South France Sept. 2005

Service Network

- 15 partners

- from 7 European countries
- **5 new in 2007** (open network)
- Risk multi-services providers via internal transfer of technology
- National Providers (distributed network)

1 METRIA

2 EUROSENSE

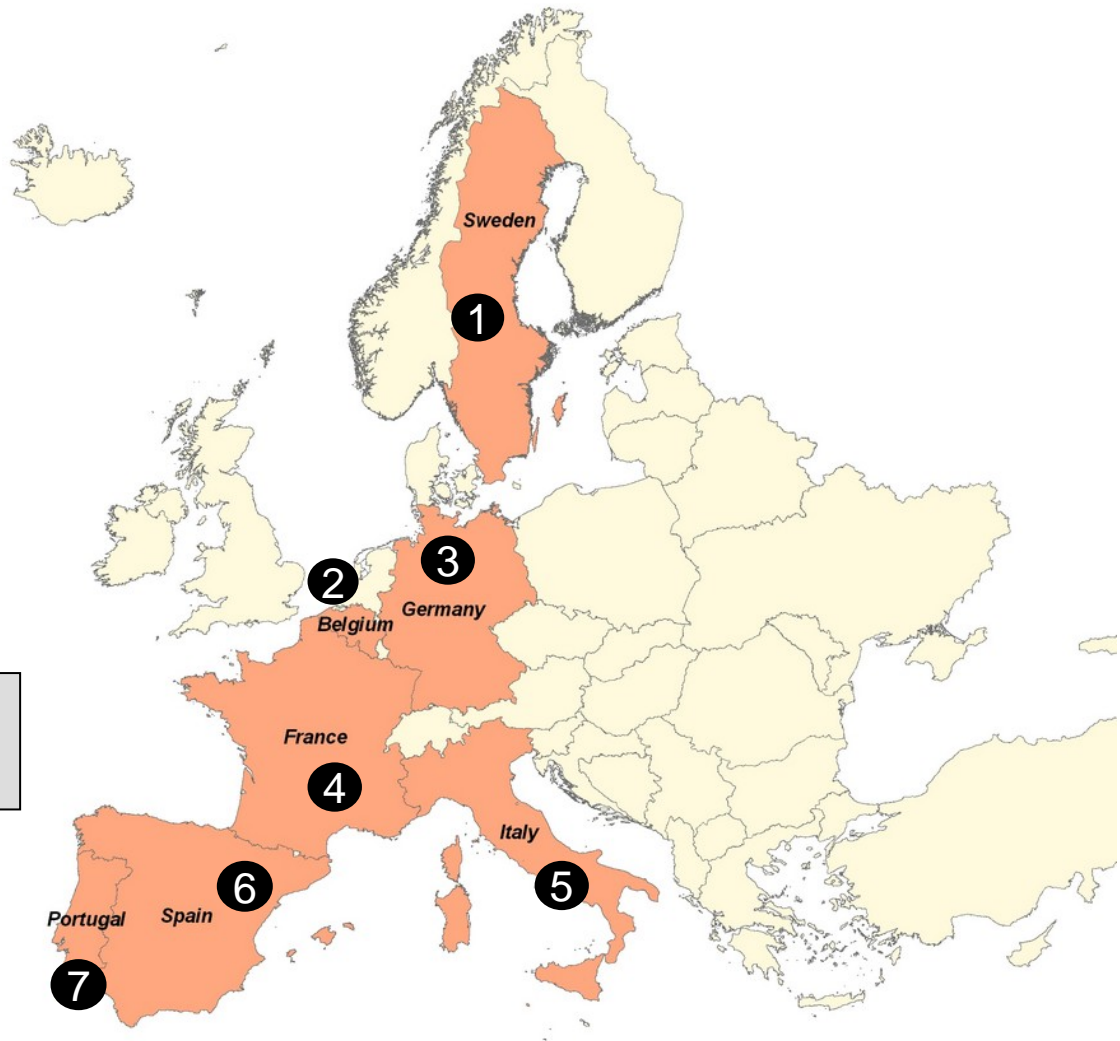
3 DLR, INFOTERRA GmbH

4 INFOTERRA France (prime),
SERTIT, METEO-France
International

5 Arpa, TELESPAZIO

6 INSA, GMV, LATUV

7 Critical Software, ADISA, INOV



RISKEOS Users

- 134 user organisations at present,
- 30 Service Level Agreements (good repartition per service, 8 new from KO).

Users involvment at 3 levels

- Steering Committee (6 National user representatives)
- User Executive Body (core group 10 members, 7 countries)
- End-users at European, National, and regional levels

Users community driven by National Civil Protection Services

USERS' FEEDBACK

- **High level of feedbacks,**
- **Users satisfied and many other potential users identified,**
- **Service / products offer considered as mature**
- **Most of RISK-EOS services are useful to implement national or European legislations eg:**
 - **Community Mechanism for cooperation in the field of Civil Protection**
 - **Flood Directive**
- **Users concern on services continuity and sustainability w.r.t funding**

Service Network sustainability

- **Operational sustainability is ensured**
 - performance improvements through the future satellites (eg: revisit)
 - Complementarity with PREVIEW allowing service portfolio extension and evolution
- **Financial sustainability has to be ensured**
 - the users community expressed that it expects a centralized European funding for GMES,

RISKEOS and the Emergency Response Core Service (ERCS) (1/2)

- **The ERCS Implementation Group report defines the ERCS service as follows :**
 - Initial service focussed on rapid mapping in support to response operations, including
 - Reference maps (population, infrastructures, ...)
 - Assessment maps
 - Service should evolve to cover crisis prevention and early warning as well as post crisis reconstruction
- **Analysis of the detailed correspondences (RISKEOS products / ERCS products) made during these two days lead to following conclusion :**
 - All RISKEOS services classified as potential “core service”
 - possibly except “flood early warning”

RISKEOS and the Emergency Response Core Service (ERCS) (2/2)

- **Therefore we understand the relationship between RISKEOS and ERCS as follows :**
 - The initial version of ERCS should put priority on the services dedicated to the response phase : Rapid Mapping (RM) , Assets Mapping (AM), and possibly Regional Fires Monitoring (RFM, ABSM)
 - Flood Risk Analysis (FRA), Flash Flood Early Warning (FFEW), and Burn Scar Mapping (BSM) , as well as some other services from PREVIEW, should also be further developed and delivered on pilot areas in order to
 - ensure continuity with respect to our users
 - prepare an extended “ ERCS version 2”.

Summary : RISKEOS future

- RISKEOS ends at end 2008
- FP7 project “EMERGENCY Fast Track”
 - ERCS Service operational qualification
 - ERCS Service evolutions
- Need for an adequate instrument for service operations (not R&D)

Thank you for your attention

www.riskeos.com