



**Polar View**

# Polar View



GMES Info Day, March 8 2007, ESRIN

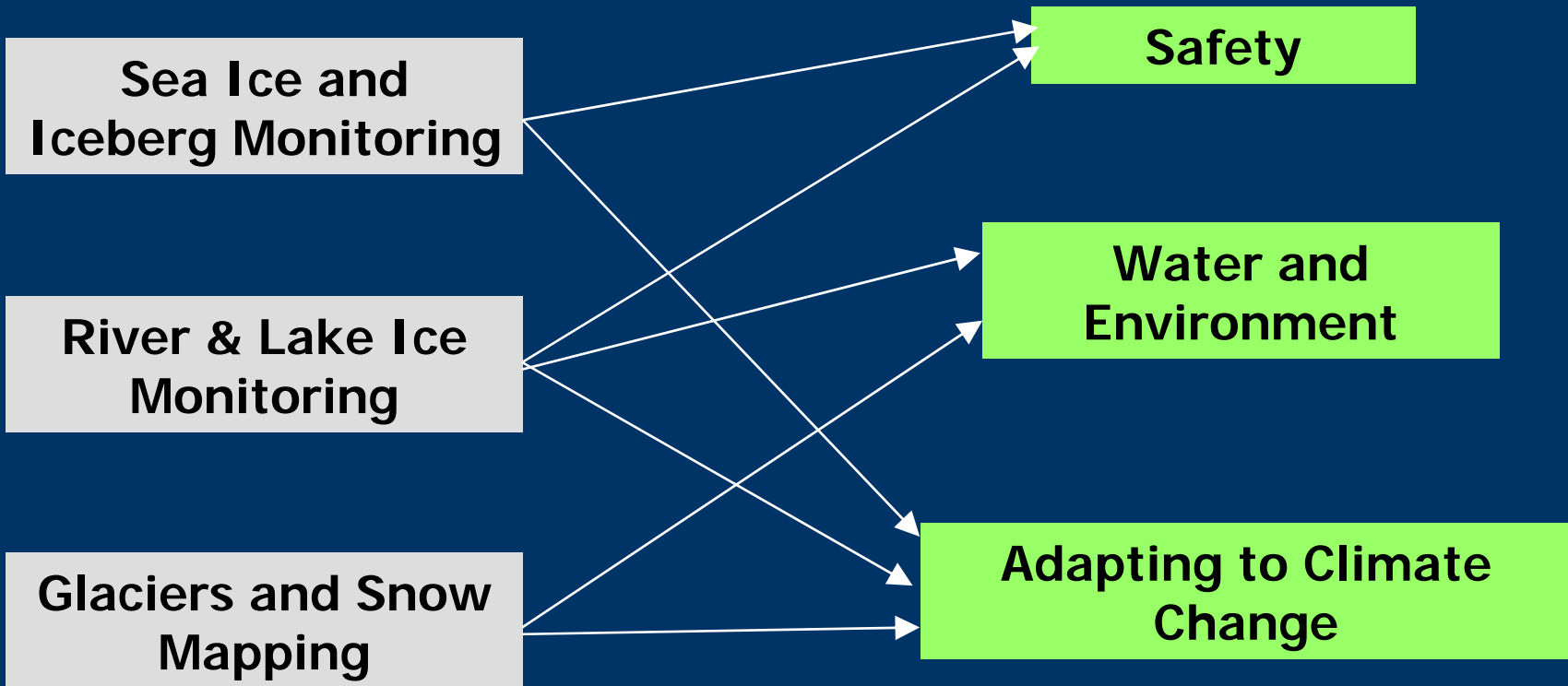


# Polar View Service Portfolio



## *Services*

## *User Concerns*



# Achievements: the numbers



- ❖ Direct interaction with users from 12 countries:

|  |   |  |  |
|--|---|--|--|
|  Denmark |  Germany |  Norway         |  Canada |
|  Estonia |  Iceland |  Sweden         |  Russia |
|  Finland |  Italy   |  United Kingdom |  USA    |

- ❖ 47 core user bodies representing 1000s of users directly receiving Polar View products
- ❖ 53 Service Level Agreements

# Achievements: the numbers



## ❖ Information Dissemination

- >5500 products delivered since July 2005
- Web access to products > 300,000 since July 2006

## ❖ External Financial Support

- > €1M for R&D to support Polar View services (Polar View budget is €8M)
- €800K in-kind support from users for validation

## ❖ 71 media stories reporting on Polar View responding to public issues

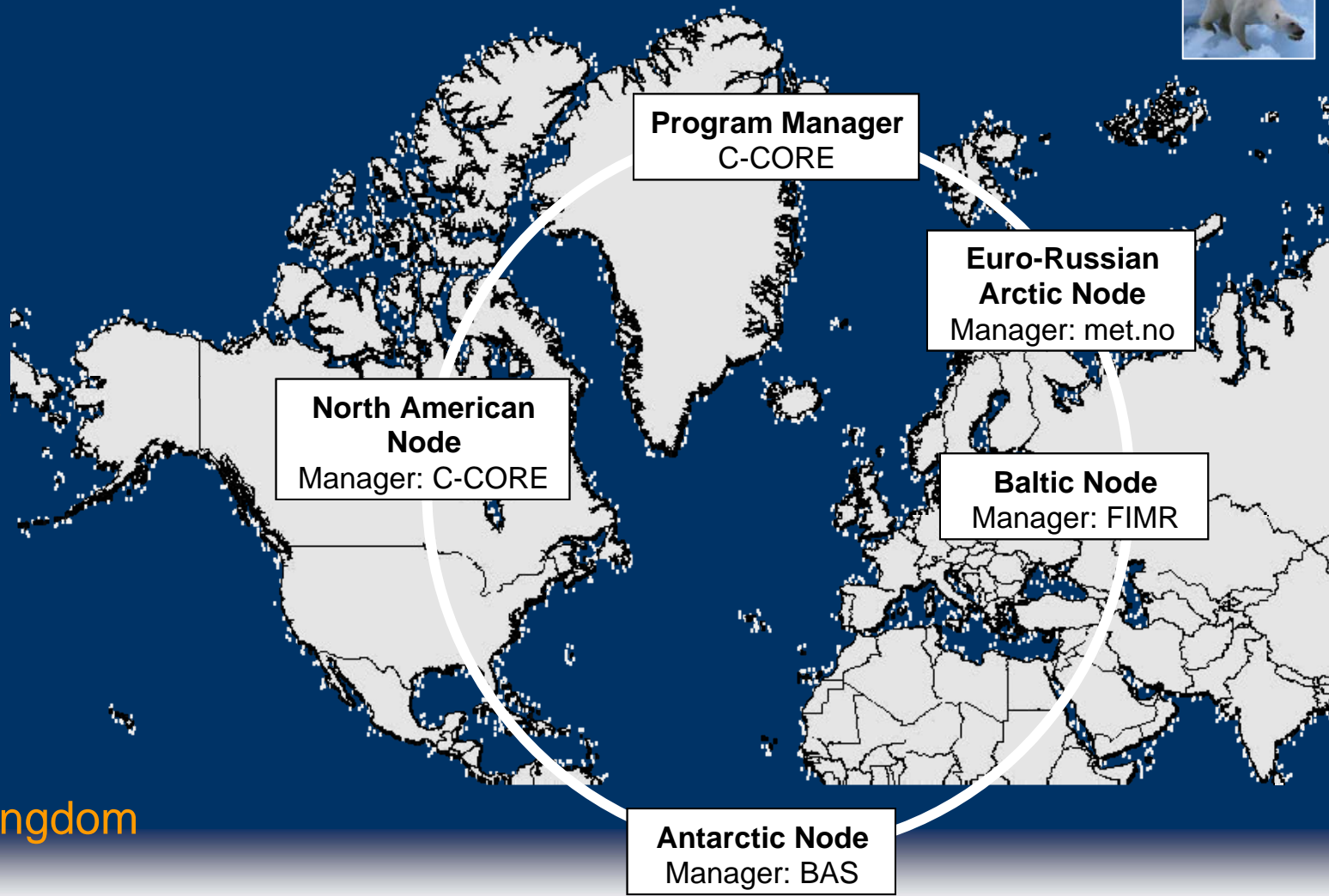
## ❖ Expanded to the 2 poles

# Polar View Network

80 Partners, 14 Countries



-  Belgium
-  Canada
-  Denmark
-  Estonia
-  France
-  Finland
-  Germany
-  Iceland, Norway, Sweden
-  Italy
-  Russia
-  United Kingdom
-  USA



# Impacts



- ❖ Achieved international collaboration to address specific issues of public concern
- ❖ Saved lives and property
- ❖ Helped citizens adapt to climate change
- ❖ Saved users' money
- ❖ Initiated international standards

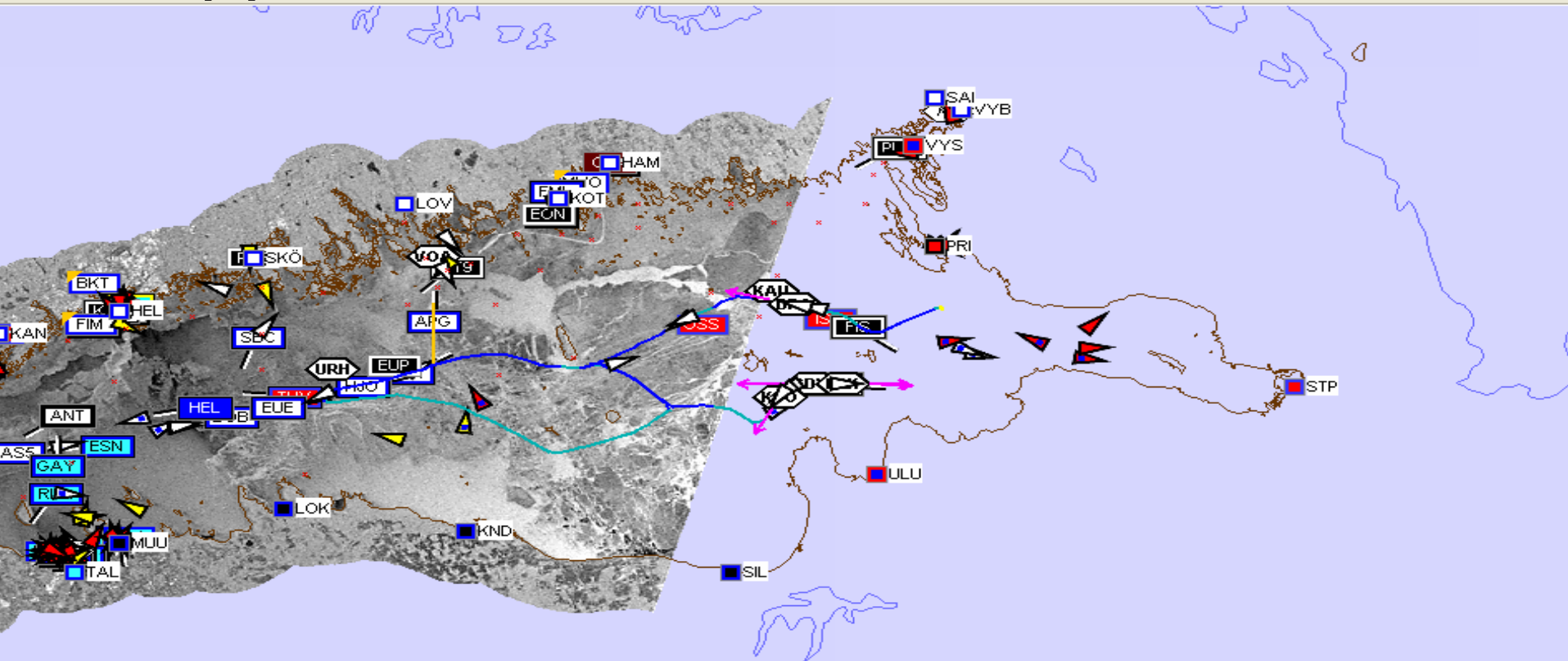
# Users

---



- ❖ Services respond to user needs
- ❖ Positive experience with GSE process
- ❖ Users are integrating Polar View services into their operations

# What would happen if service stopped?



**In 2003 more than 100 vessels were damaged in the Gulf**

# Users

---



- ❖ Commitment by EC for continued GMES services is positive
- ❖ Unclear if, when, what services can be expected in the future
- ❖ Users are committed, but sustainability takes time

# The Future



- ❖ 3% of Polar View is reflected in the Fast Track MCS
  - Global Sea Ice products
  
- ❖ 65% of services fit into the Downstream Marine Service
  - Hi-resolution ice charts
  - Iceberg monitoring
  - Ice forecasting
  
- ❖ 32% of services do not fit in Marine Service
  - Snow monitoring (Germany, Norway, Finland, Sweden, Estonia)
  - Glacier Monitoring (Sweden, Norway, Iceland, Canada)
  - River & Lake Ice (Russia, Canada, USA)

# The Future



- ❖ Polar View Program terminates July 2008
  - Fall '07 – Spring '08 will be the last monitoring season
- ❖ Users informed of schedule at start of Polar View
  - high level of user commitment to sustain services
  - “service not in place long enough to become a budget item”
- ❖ Majority of Polar View will likely not survive
- ❖ Risk of losing this unique collaboration

# Polar View is:

---



- ❖ an example of GEOSSS implemented
- ❖ responding to climate change