

RESPOND

GMES Services Supporting
Humanitarian Relief, Disaster
Reduction & Reconstruction

Respond : Who gets What, Where and When?



Nick Veck

(on behalf of the Partnership)

Respond IS:

- A long term effort to establish **GUARANTEED** levels of SERVICE
- User-driven
- The “A” Team, joining forces
- A “Back Office”
 - ↳ Existing supply chains continued
 - ↳ Huge Capacity
- An “Entry Point”
 - ↳ New users directed to friendly faces.

Respond IS NOT:

- A Project
- An Industrial Initiative
- An excuse to launch more satellites!



Respond – Consolidation - Stage 1

- Service Portfolio defined...
- Delivery Methods proven...
- Useful Products delivered...
- ...User Feedback very positive.



Health maps

Environmental impact and assessment maps

Basic maps

Communication and reporting resources

Refugee/IDP support

Crisis and damage mapping

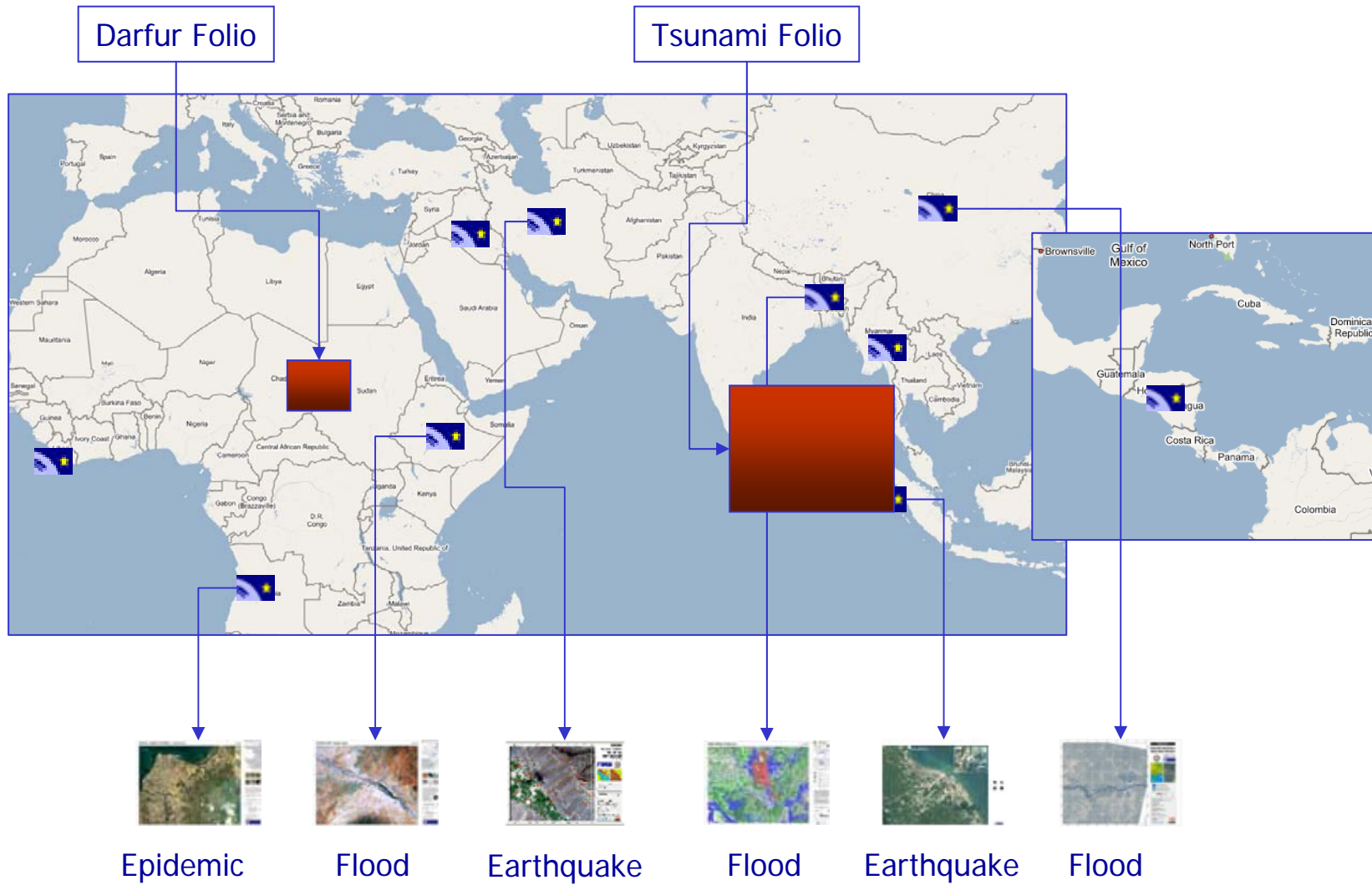
Thematic maps

Situation maps

Alert services

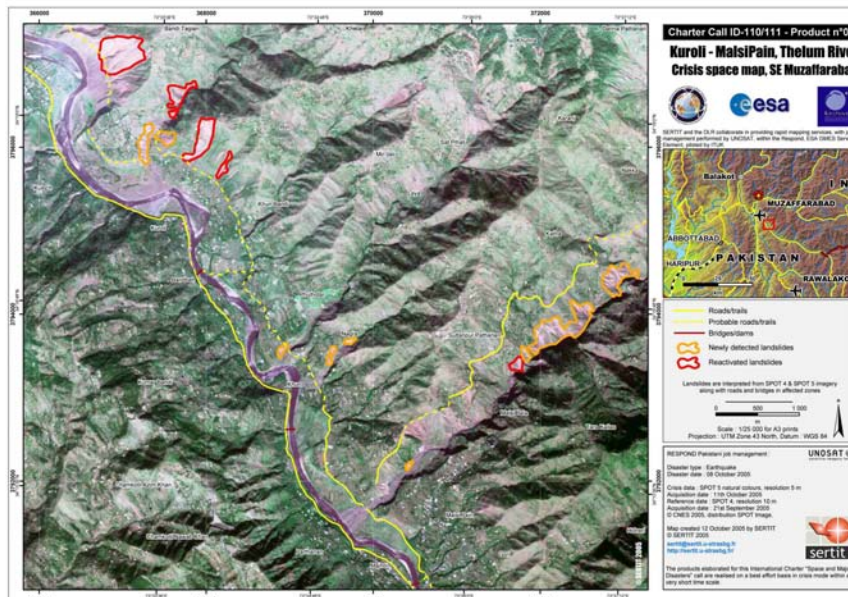


Respond – Services Delivered...



Responding to Crises:

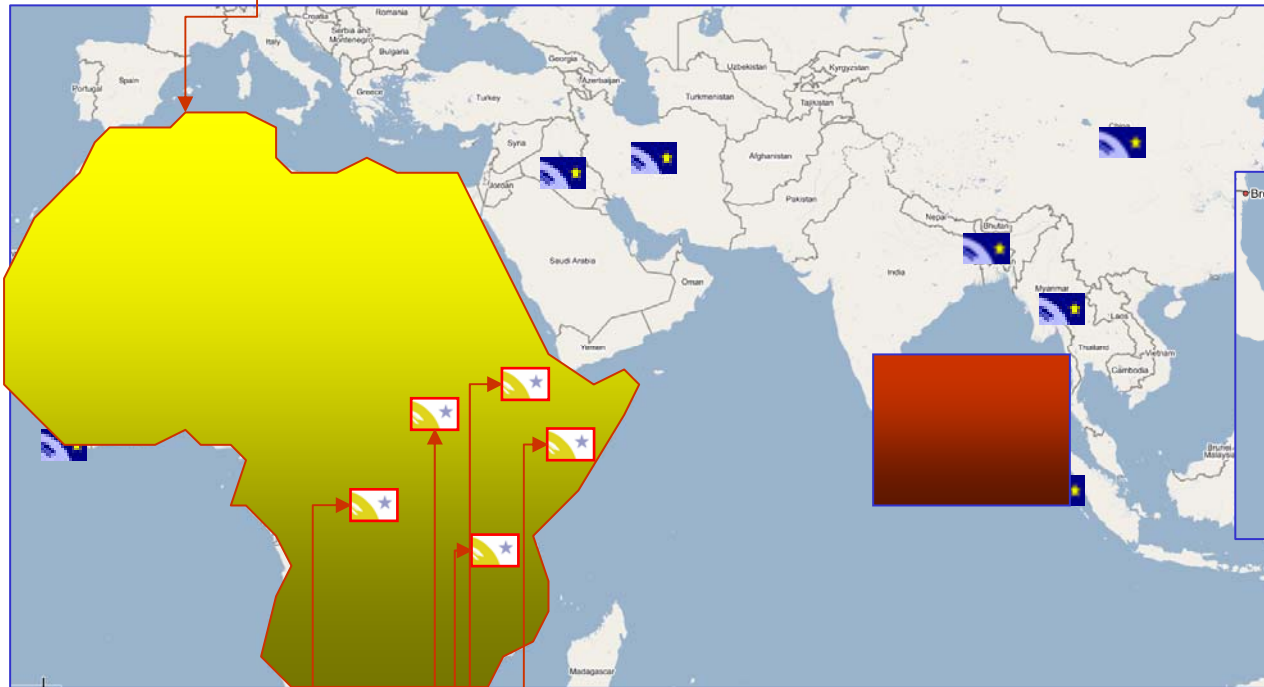
- After the Tsunami - **Respond** partners immediately in action:
 - Some 214 products delivered in first 3 weeks.
 - **Respond** started with a co-ordination and product distribution role.
 - Partners still providing information for reconstruction activities.



- Similar (but smaller) activity following recent **Asian earthquake**.

Respond – Services in the pipeline – Stage 2

Web Map Layers for Africa



Landslide Vulnerability

Radio Planning

Logistics Maps






Refugee / IDP
+ Field Support

Land Cover
Mapping

+ Crisis & Damage Mapping – wherever it occurs
+ Support to Health Actions (TBD)

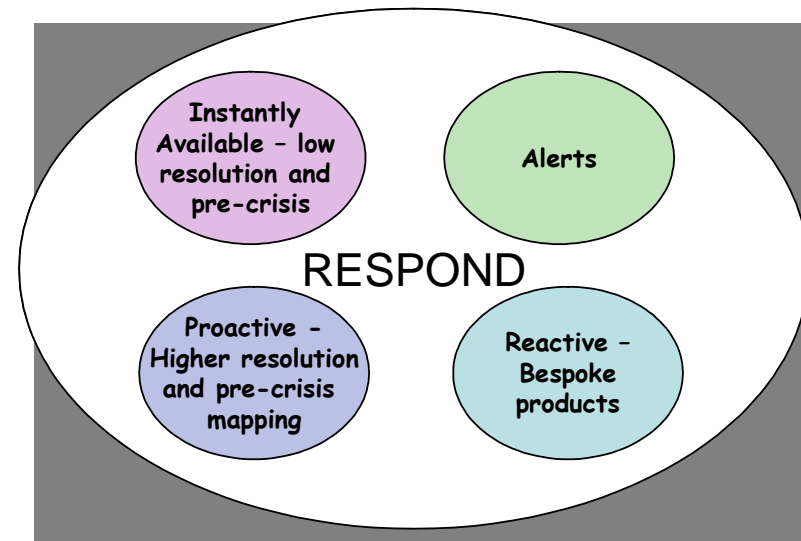


Growth: Delivering services and benefits to users on progressively larger scales...

Services	Stage 2 (3 years)
 <p>Basic Maps</p>	<p>Provide an archive of map products at known useful scales likely to be of interest to humanitarian and development aid agencies.</p>
 <p>Crisis and Damage Mapping</p>	<p>Assessment of the state of infrastructure during humanitarian crisis situations / catastrophic events.</p>
 <p>Situation Maps</p>	<p>Aim to provide users with the most up-to-date operational geographic information regarding a specific situation.</p>
 <p>Refugee/IDP Support maps</p>	<p>Variety of products related to the mapping & management of refugees and IDP camps.</p>
 <p>Thematic maps for prevention, reconstruction and planning Health maps/Environmental Impact Maps</p>	<p>A number of UN agencies have indicated a specific interest in this type of mapping, both on a local and a country-wide scale.</p>
<p>Alert services</p>	<p>Link to a wide variety of information streams on fast and slow onset emergencies.</p>
<p>Communication/reporting</p>	<p>Increase the media-friendly output of map graphics when maps are created within Respond.</p>

Stage 2 Indicative Service Levels (tbc)

Product	Stage 2 (3 years) Baseline+Extension
Basic Maps	250 + 55
Crisis and Damage Mapping	55 + 45
Situation Maps	50 + 15 (in 1000's hard copies)
Refugee/ IDP Support maps	65 + 10
Thematic maps for prevention, reconstruction and planning/ Health maps/ Environmental Impact Maps	100 + 80
Alert services	To 100's users
Communication/ reporting	50 + 10 + on-line system



Issues for Stage 2:

To establish a durable, open and distributed GMES Service Provision Network

■ User Networks

- Develop role as a “back office” for user groupings with already established supply route.

■ Within the Consortium

- Take on a legal identity that is recognisable by all partners.

■ Network Infrastructure

- A single central access point for sharing data and products owned by **Respond** (OGC);
- Central catalogue and inventory to enable better knowledge and access.



Co-ordination and Sustainability

■ Co-ordination (networking):

- ↪ Most important is with User and beneficiary communities!
- ↪ Synergies with other GSE's, primarily
 - Risk-EOS (eg. EU25+, RoW)
 - GMFS (esp. Africa).
- ↪ Others
 - build on (previous) DUE EPIDEMIO results
 - EC FWP IPs (esp. Geoland, LIMES, HARMLESS, BOSS4).

■ Moving towards sustainability...

- ↪ Humanitarian agencies already buying services (eg. through UNOSAT)
- ↪ Prototype/Pilot services for the Commission (BOSS4), leading to Fast-Track Services (INSCRIT)
- ↪ Develop synergies with **Respond** partners' existing products and markets (eg. National institutions and Development Banks)



What do we want from these 3 days?



- **Co-ordination (networking):**
 - ↪ Consolidated Links with other GSE's.
- **Knowledge and Understanding:**
 - ↪ INSPIRE?
 - ↪ INSCRIT?
- **Influence:**
 - ↪ Data requirements/policy;
 - ↪ Charter requirements/policy.

