

MarCoast

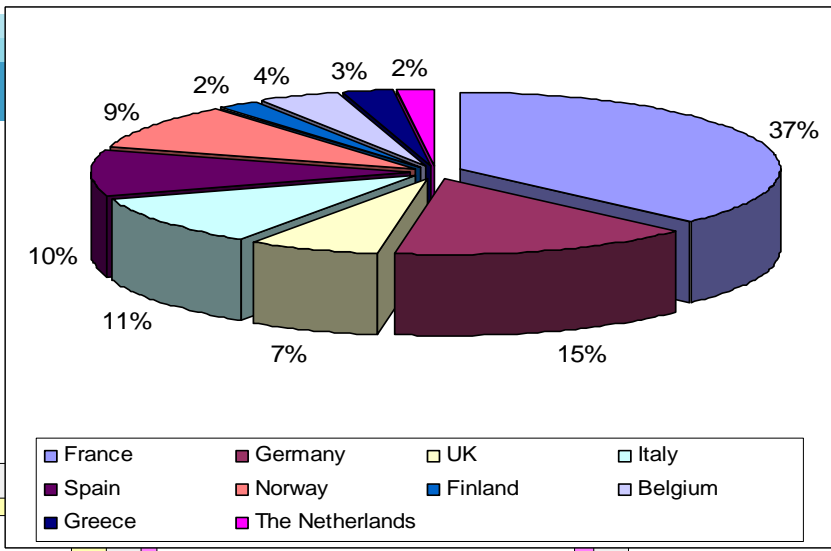
Who gets what, where and when ?

Jérôme Bruniquel (Alcatel Alenia Space)

GSE co-location meeting 4, 6-8 December 2005

ESA ESRIN, Frascati

- Continuation of ROSES and COASTWATCH projects
- 32 partners
- 10 countries



Strategy group

Peter RYDER
G. LE LANN
R. PATRUNO

Project Consortium

System Partners	Operational service providers
AGI	ACRI
AAS	IVM
BfG	BMT
Brockmann Consult	JRC
CEDRE	BOOST
CLS	KSAT
DNV	Brockmann Consult
ETC-TE	MERCATOR OCEAN
GTD	BSH
RIKZ	Météo-France
SOS	CLS
STARLAB	MUMM
TPZ	DLR
	NERSC
	FIMR
	PLANETEK
	GTD
	STARLAB
	HCMR
	SYKE
	IFREMER
	Telespazio
	INGV
	UK Met Office

Core Users group

CEDRE (F)
IFREMER (F)
Météo-France (F)
Port of Barcelona (Sp)
Ministerio de Fomento (Sp)
Nat. Dir. of Fisheries (N)
Norwegian Seafood Federation (N)
Institute of Marine Research (N)
Maritime & Coastguard Ag. (UK)
Environmental Ag. (UK)
UK Met-Office (UK)
Ministero dell'Ambiente (It)
Ministry of Merchant Marine (Greece)
BSH (G)
BFG (G)
RIKZ (NL)
European Environment Agency

■ Service demonstrations & operation

- Users interest raised in Spain, France, Italy (Oil Spill services)
- Users involvement consolidated
 - ❖ in Greece (Oil Spill)
 - ❖ In France, Norway and UK (Algae Bloom)
- Upgraded service specification

■ Networking & Strategy

- Users awareness, moving toward federation
- Initial service providers federation
- Definition of a Strategic Plan for next 10 years

Service portfolio

The service portfolio covers the whole supply chain from data to integrated products such as indicators or recommendations. It comprises :

- **Water quality monitoring service,**
- **Coastal land mapping service,**
- **Coastal hydrodynamics service,**
- **Coastal indicators service.**

Environmental regulations background

ICZM / Water Framework Directive / Regional treaties

Land products

Coastal Land Cover Change
Coastal environmental indicators (Coastal erosion / usage conflicts)

Marine products

Chlorophyll a concentration
Water transparency
Turbidity
Yellow Substance (CDOM)
Sea Surface Temperature
Mesoscale structures
Algal bloom detection

Coverage of Coastwatch products
Daily and worldwide (1km)

EO data sources
MERIS, AVHRR, SeaWIFS, MODIS

Service providers

ACRI-ST (France)
ARGOSS (The Netherlands)
Brockmann Consult (Germany)
DLR (Germany)
ETC-TE (Spain)
GIM (Belgium)
HR Wallingford (UK)
SOS (UK)

Users

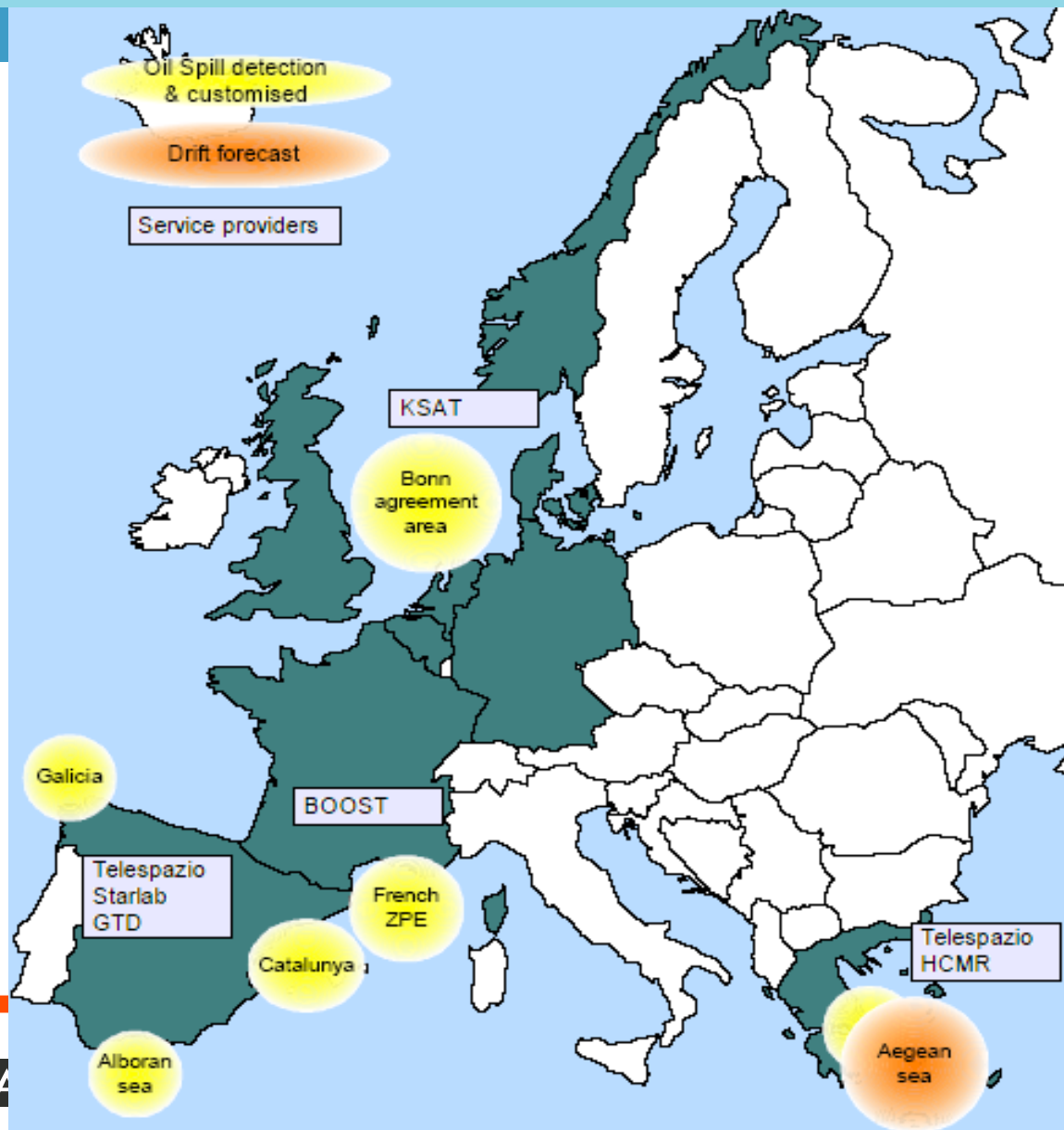
Africa-GOOS (Unesco)
BSH (Germany)
CEDRE (France)
COM (France)
Coordination Center for ICZM (Bel.)
CRTS (Morocco)
European Environmental Agency
Generalitat de Catalonia (Spain)
ICC (Spain)
IFREMER (France)
IMR (Norway)
IPIMAR (Portugal)
RIKZ (The Netherlands)

Service status (end of 2004)

Processing and delivery of more than **7300** EO derived products – regional scale - to **14** users

■ MarCoast Oil Spill services

- Oil spill surveillance and customised information (S1, KSAT)
- Oil spill drift forecast (S2, BMT)



■ Oil spill surveillance and customised information (S1, KSAT)

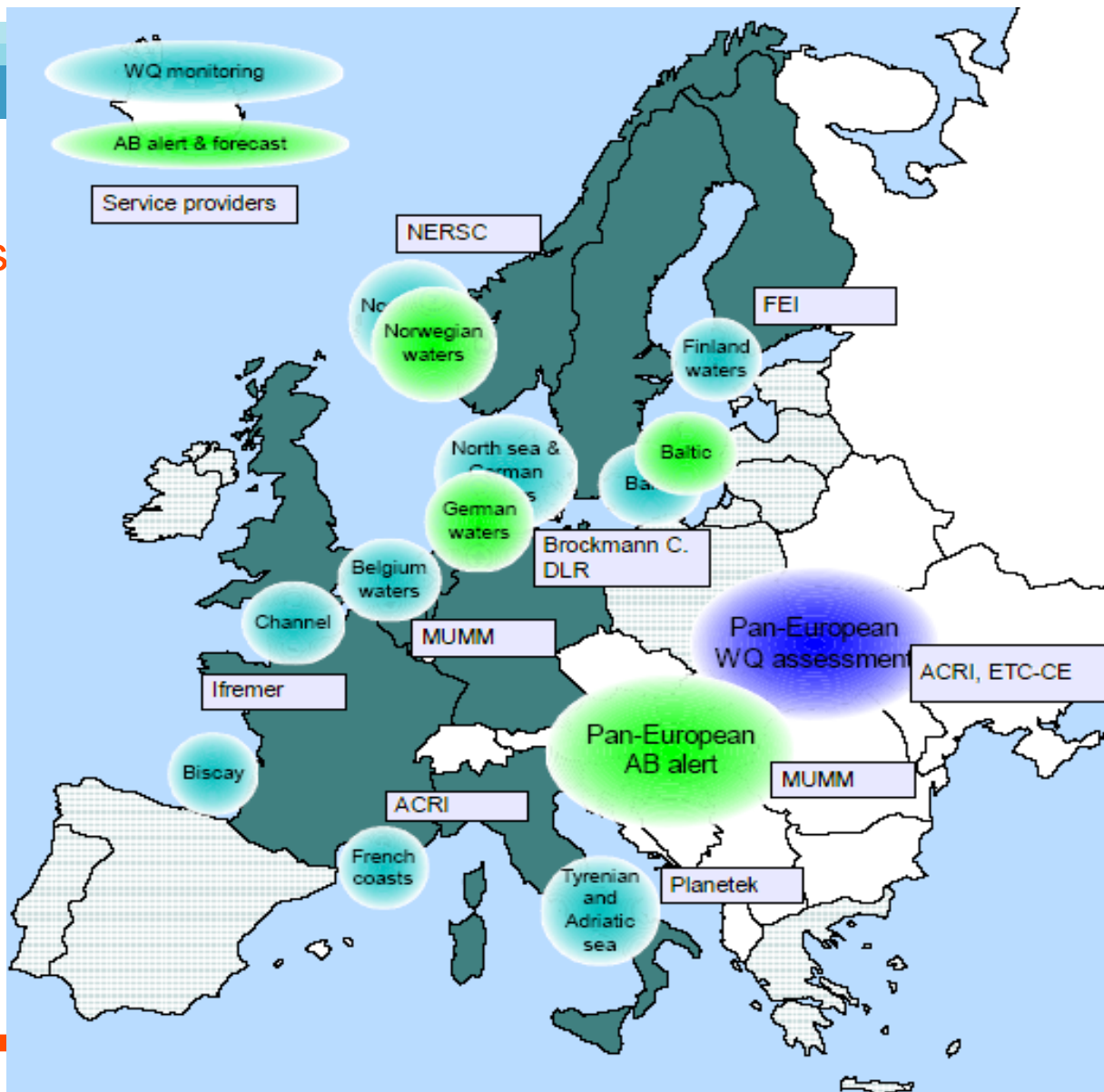
- Service providers
 - ❖ KSAT, BOOST Technologies, Telespazio, Starlab, HCMR
- Users
 - ❖ MCA, UK EEZ
 - ❖ BfG, German EEZ
 - ❖ NSD, Netherlands EEZ
 - ❖ MUMM, Belgian EEZ
 - ❖ CEDRE, French ZPE
 - ❖ HMMM, the Aegean Sea
 - ❖ Port of Gijon, Galicia
 - ❖ Port of Barcelona, Barcelona coast

■ Oil spill drift forecast (S2, BMT)

- Service providers
 - ❖ BMT/HCMR
- Users
 - ❖ HMMM, the Aegean Sea

■ MarCoast Water Quality services

- Water quality monitoring and alert (S3, Planetek)
- HAB monitoring, evolution and forecasting (S4, MUMM)
- Water quality assessment service (S5, ACRI)
- Met-Ocean data (S6, Mercator-Ocean)



■ Water Quality Monitoring (S3, Planetek)

- Service providers
 - ❖ Planetek, MUMM, Brockmann Consult, DLR, IFREMER, ACRI-ST, NERSC, SYKE
- Users
 - ❖ Service Public Général de Santé Publique, Belgian EEZ
 - ❖ Uusimaa (Baltic Sea Protection Research), Gulf of Finland
 - ❖ BSH, North and Baltic Seas
 - ❖ IOW, Baltic Sea
 - ❖ LUNG, Baltic Sea
 - ❖ IFREMER, French Mediterranean

■ Algae Bloom (S4, MUMM)

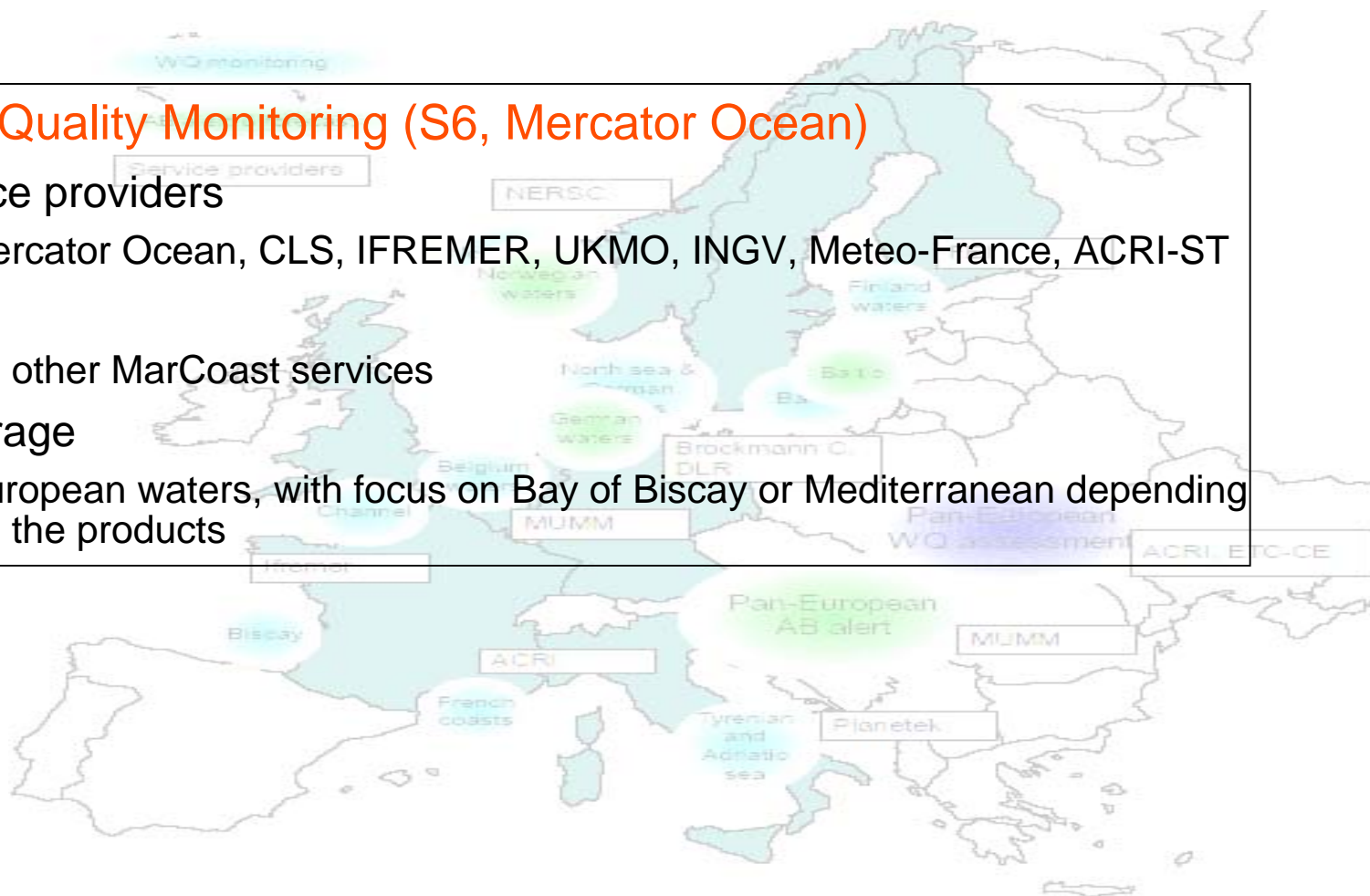
- Service providers
 - ❖ MUMM, Brockmann Consult, DLR, NERSC
- Users
 - ❖ BSH, North and Baltic Seas
 - ❖ LANU, North and Baltic Seas
 - ❖ IOW, Baltic Sea
 - ❖ LUNG, Baltic Sea

■ Water Quality Assessment (S5, ACRI)

- Service provider
 - ❖ ACRI-ST
- Users
 - ❖ EEA, European waters
 - ❖ UKMO, North Sea, Irish Sea, Channel

■ Water Quality Monitoring (S6, Mercator Ocean)

- Service providers
 - ❖ Mercator Ocean, CLS, IFREMER, UKMO, INGV, Meteo-France, ACRI-ST
- Users
 - ❖ All other MarCoast services
- Coverage
 - ❖ European waters, with focus on Bay of Biscay or Mediterranean depending on the products



■ To move on from the MarCoast project to the MarCoast network

- Setting-up of boards
 - ❖ Service board, UEB, Service Strategy Group
- Principles and rules to establish
 - ❖ Service Partnership Protocol
- Consolidation of the service provision network
 - ❖ Harmonisation of service chains, infrastructure, ...

■ Sustainability

- Foster the awareness and the trust of the users
- Validation activities
 - ❖ Reach and maintain the same level for OS and WQ service lines
- Increase the number of users
- Cost share
 - ❖ Are all potential users ready to pay (even partially) for a given service ?

■ Additional growth

- Enlarge the coverage, consolidate and increase the users basis
- Propose new services (e.g. FR Meris-based services)

- **ESA data acquisition policy**
 - e.g., SAR NRT capacity
- **Synergies and links between GSE and fast-track service**
 - S6 service (“MetOcean data”)